

# HAIRSTYLIST

## Candidate Information Package

*This information is current as of April 1, 2024.*

The **Candidate Information Package** is intended to provide information and help prepare candidates for the Saskatchewan Journeyperson Hairstylist Practical Examination. **Candidates are strongly encouraged to study and review this document, and to use the checklist as a guide during the examination.**

Understanding the tasks within each demonstration, and how tasks will be assessed will help candidates prepare for successful completion.

The Interprovincial Journeyperson Examination has both a **written** and **practical** examination.

- Both the written and practical examinations may be video recorded.
- The **written** examination **MUST** be completed successfully before applying for the practical examination.
- The **practical** examination is comprehensive and is designed to test the full spectrum of basic knowledge, skill, and attitudes of your trade.

**All current public health orders at time of examination must be followed.**

### General Information:

- Verbal or physical abuse by candidates towards any person at the examination facility will not be tolerated. Instances of abuse will result in the immediate termination of the candidate's examination attempt at the expense of the candidate.
- **Absolutely no cell phones, communication devices or electronic devices** of any sort are allowed in the examination facility. You will be required to leave immediately if any of these items are found in your possession.

### Inclement Weather and Travel:

- In the event of road closures due to weather conditions **please contact our examination coordinator at 306-787-9873**. Please leave a detailed message with your **name, trade, exam date** and the **reason for no travel** such as *“Highway 11 is closed advising do not travel.”* Your examination may be rescheduled one time at no cost to you.

Please note that examinations and study information change frequently. The most recent information is available on our website at [www.saskapprenticeship.ca](http://www.saskapprenticeship.ca).

## Table of Contents

<b>Practical Examination Information .....</b>	<b>3</b>
<b>Hairstylist Practical Examination Schedule .....</b>	<b>3</b>
<b>Hair Model Information .....</b>	<b>4</b>
<b>Mannequin Model: Differences .....</b>	<b>5</b>
<b>Hair Measurement .....</b>	<b>6</b>
<b>Candidate Checklist .....</b>	<b>6</b>
<b>Candidate Checklist: Visual Diagrams.....</b>	<b>15</b>
<b>Commonly Asked Questions.....</b>	<b>22</b>
<i>APPENDIX A - Foil and Colour Retouch Measurement Chart .....</i>	<i>25</i>
<i>APPENDIX B - Model Release Form .....</i>	<i>26</i>

## Practical Examination Information

- Your performance during this examination will be **assessed by two (2) members of the Hairstylist Trade Examining Board (TEB)** appointed by the SATCC.
- **Assessors will use the score sheet** provided by the Apprenticeship Services Consultant invigilating the examination. TEB members have been trained specifically to assess practical examinations.
- Marking criteria is based on the competency expected of an **entry-level** Journeyperson.
- This is a **TIMED EXAMINATION**
- The **PASS MARK is 70%**, ALL MARKS ARE FINAL.
- Results from this practical will be posted on MyATC within **four to six (4-6) weeks** of your examination date. Please do not call as they will not release personal information over the phone. Feedback or questions about the results should be directed to your local Saskatchewan Apprenticeship and Trade Certification Commission Field Office.

<b>Hairstylist Practical Examination Schedule</b>		
<i>Parking in an all-day parking lot is recommended.</i>		
<b><u>Approximate Timeline</u></b>	<b><u>Time allotted</u></b>	<b><u>Tasks</u></b>
8:00 – 8:30 a.m.	30 minutes	<b>Arrival/Check-in</b> <i>Who: Candidate and Morning Model <b>OR</b> Candidate with Mannequin</i>
8:30 – 8:40 a.m.	10 minutes	<b>Briefing by Invigilator</b>
8:55 – 9:10 a.m.	15 minutes	Simulated Colour Retouch One-half Inch Regrowth Demonstration
9:25 – 9:40 a.m.	15 minutes	Simulated Foil Demonstration
9:55 – 10:25 a.m.	30 minutes	Layered Hair Shaping Demonstration
10:40 – 11:25 a.m.	45 minutes	Permanent Wave Demonstration
11:40 a.m. – 12:00 p.m.	20 minutes	Finished Blow Dry Style Demonstration
<b>Lunch Break</b>		
1:00 – 1:10 p.m.	10 minutes	<b>Briefing by Invigilator</b>
1:10 – 1:40 p.m.	30 minutes	Curling Iron Demonstration
1:40 – 1:50 p.m.	10 minutes	- Full Head of Curls - Comb out
2:05 – 2:35 p.m.	30 minutes	Electric Clipper Cut Demonstration

***Fifteen (15) minutes is provided between tasks to allow time for the assessment of work demonstrated.***

## Hair Model Information

### **REQUIRED:**

**One (1) or Two (2) Models (One [1] if model agrees for all tasks to be performed)**

**OR**

**One (1) mannequin for all tasks**

### **Model Criteria**

- Models must have **clean, dry hair**.
- Models must have a **full head of hair**. \*\*
- Models must be a **minimum of 16 years** old.
- Models **cannot** be Journeyperson Hairstylists, hairstylist students, or be holders of Learner's Certificates or Special Permits.
- Models must **complete a Release Form** prior to the practical examination (refer to Appendix B: Model Release Form on pages 17-18)

*The gender of your model is at your discretion, as long as they meet the requirements above.*

### **Mannequin Criteria**

- Mannequin hair must be made with **100% human hair**.
- Mannequin hair must be **clean**, and **dry**.
- Mannequin hair should have a starting length between **six (6) to nine (9) inches**. \*\*
- Mannequin hair should be safe for temperatures up to **450°**.
- Candidates must supply their own mannequin and mannequin stand/tripod.

*\*\* If hair length is too short or too long, the tasks will become too difficult to complete. Ensuring the hair length is between **six (6) to nine (9) inches** will help you prepare for success.*

### **Model One (1)**

*The same model will be used for the following demonstrations:*

1. Simulated Colour Retouch (a.m.)
2. Simulated Foil (a.m.)
3. Layered Hair Shaping (a.m.)
4. Permanent Wave (a.m.)
5. Finished Blow Dry Style (a.m.)
6. Curling Iron (p.m.)

**Arrive in the morning, at 8:00 a.m.**

### **Model Two (2)**

*This model is **only** for the Electric Clipper Cut Demonstration.*

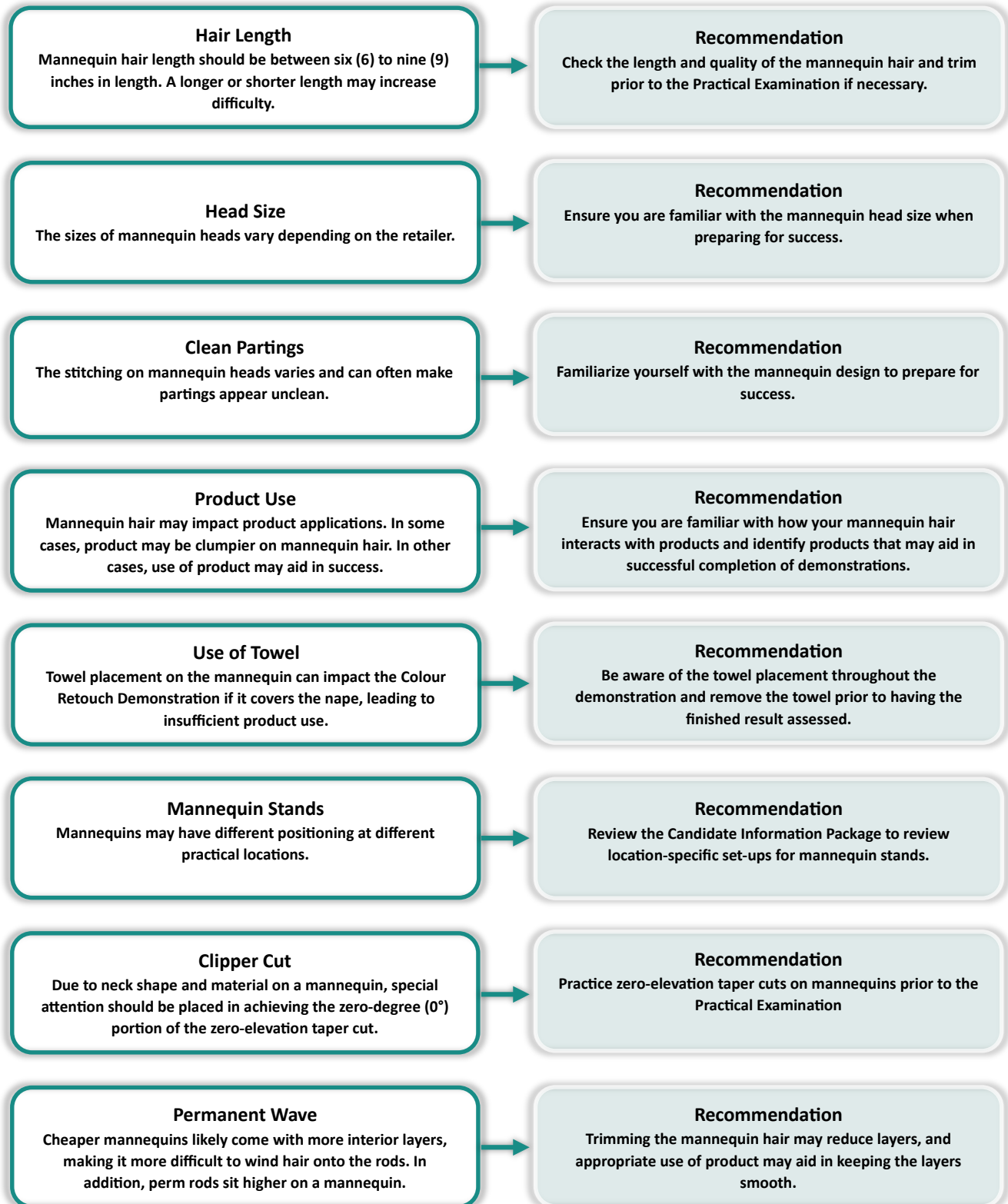
7. Electric Clipper Cut (p.m.)

**Model Two (2) should arrive with clean hair.**  
**If a model arrives with dirty hair, any shampooing must be performed inside of the 15 minutes of transition time allotted prior to the demonstration.**

**Arrive in the afternoon, at 1:40 p.m.**

## Mannequin Model: Differences

When deciding whether to complete the Hairstylist Practical Examination with a mannequin model or a human model, please consider the following information:



## Hair Measurement

### Measuring Hair: Model & Mannequin

Each measurement is taken from the model's head at **90° angle**. The Assessors' measure in the following **four (4) places**:

1. Centre, front hairline
2. In front of the ear (both right and left sides)
3. Centre, nape
4. Crown

### Measuring Hair: Assessment

Minimum Hair Removal:

- The **Layered Hair Shaping Demonstration** must have a **minimum of one (1) inch or more of hair removed** including the fringe/bang area.
- The **Electric Clipper Cut Demonstration** must have a **minimum of a quarter (1/4) inch of hair removed**.

Starting/Finishing Lengths:

- Neither of the haircuts have required starting or finishing lengths. However, both haircuts state a minimum length of removal. The recommended starting length for the practical examination is **six (6) to nine (9) inches**.

*All measurements are taken **90°** from the head. Please consider the tasks you need to perform as they relate to the hair length.*

## Candidate Checklist

It is **highly recommended** that the candidates become familiar with the Candidate Checklist. The candidate should:

- Practice using the checklist when preparing for the practical examination.
- Bring a copy of the Candidate Checklist to use during the practical examination.

*The use of the Candidate Checklist will help the candidate ensure that all aspects of the demonstration are completed correctly.*

## Professional Equipment and Supplies Required

### REMEMBER TO BRING ALL SUPPLIES

*Candidates are responsible for all their own equipment and supplies and may **NOT** borrow from the exam facility or other candidates.*

#### SUPPLIES REQUIRED

- Blow dryer with nozzle attachment
- Brushes (Various styling brushes)
- Capes
- Colour applicator (Bowl, brush or bottle)
- Simulated colour (Such as conditioner - No styling gel products please)
- Conventional perm rods with elastics
- Size / colour of rod is candidate's choice
- Combs (**no** weave combs)
- Three (3) tail combs
- One (1) factory marked comb in inches
- Curling iron(s)\*Marcel and/or Spring types
- Eight (8) dual clips / jaw clips
- Electric clippers
- End papers
- Extension cord and / or power bar
- Foils / Foam / Mesh enough to complete four woven highlights and four slices.
- Glove(s)
- Neck duster
- Pen or pencil
- Scissors / shears
- Shampoo and conditioner
- Styling aids
- Timer
- Towels (Approx. 10)
- Water spray bottle

#### OPTIONAL ITEMS

- Cotton batting
- Electric trimmers
- Heat styling implements
- Neck strips
- Pincurl clips
- Razor
- Thinning / chunking shears taper/barbering comb.
- Taper comb

### Items **NOT** allowed during the Hairstylist Practical Examination

- Cellular phones and electronic devices
- Clipper guards
- Carts
- Weave Combs

## Simulated Colour Retouch ½ in. Regrowth Demonstration

The time frame to complete this task is  
**15 minutes**

### Overview

The candidate will complete a simulated **1/2 inch** colour retouch:

- on **only** the right side or left side of the head
- following the guidelines below:
  - correct draping for mannequins and models
  - correct sectioning
  - correct sub-sectioning
  - correct application
  - controlled finished results
  - complete front and back quadrant (Only right side or left side)
  - completed on dry hair

*Using simulated colour product such as conditioner.*

### Candidate Pre-Assessment Checklist

- The task is started on dry hair
- Outer towel protection is used
- Glove(s) worn before application starts
- The hair divided into **two (2) equal sections**
  - Front
  - Back
- The sections are outlined with product
- The product applied from the part of the subsection
- The product applied to **1/2 inch** of hair
- Finished application
  - Scalp aeration completed through the entire application
  - Subsections **1/4 inch**
  - 1/2 inch** application only
  - Controlled application
  - Sufficient product used
- Outer towel protection was removed
- Have you completed all steps in this checklist? Review Checklist.**

*\*\*Refer to Appendix A: Foil and Colour Retouch Measurement Chart on page 15.*



## Simulated Foil Demonstration

The time frame to complete this task is  
**15 minutes**

**Note:**

- This task is performed on the **opposite side** of the head than where the Colour Retouch was performed.
- **Do not** side lock/fold the foils as Assessors do not want to disturb your work when they unfold them.

### Overview

The candidate will complete **eight (8) single fold foils**. All foils will have **1/8 inch sections in between each foil**.

- **Four (4) foils** will be **1/8 inch** finely **woven highlights** with 1/8 inch sections in between the highlights, placed **horizontally** on the head in relation to the floor
- **Four (4) foils** will be **1/8 inch slices** with 1/8 inch sections in between the slices, placed **diagonally** on the head in relation to the floor (**Not vertically**)

*Using simulated highlight product such as conditioner.*

**The foils will demonstrate:**

- Proper technique\*\*
- Proper folding technique with no firm crease\*\*
- Proper placement (Horizontal weaves and Diagonal slices)
- Accurate sectioning
- Product control and application completed on dry hair.

### Candidate Pre-Assessment Checklist

- This task is started on **dry hair**
- There are **two (2) distinct panels** including
  - Four (4) woven highlights** which are:
    - Horizontally** placed
    - 1/8 inch finely **woven**
    - 1/8 inch sections **in between** highlights
  - Four (4) slices** which are:
    - Diagonally** placed
    - 1/8 inch **slices**
    - 1/8 inch sections **in between** sections
- The **panel width should be slightly less** than foil, foam, or mesh width
- A **single-fold technique** has been used (no multiple folds, or bunched foils, foam, or mesh)
- Sub-sections are **1/8 inch thick**
- The application is **1/8 inch away from the scalp**
- The application should have
  - Highlight / slice **saturation**
  - Product **control** (no product should be coming out of the sides of the foil, or at the scalp)
- Have you completed all steps in this checklist? Review Checklist.**

*\*\*Refer to Appendix A: Foil and Colour Retouch Measurement Chart on page 15.*

## Layered Hair Shaping Demonstration

The time frame to complete this task is  
**30 minutes**

**Note:**

- This demonstration is assessed on **wet hair**.

### Overview

The candidate will produce a layered hair shaping with the following characteristics:

- Is **connected at perimeter**
- Is cleanly **blended**
- Is an **equally layered OR symmetrical cut**
- A minimum of **one (1) inch** of hair removed
- **Only scissors** are to be used, as there is no point cutting or texturizing allowed

### Candidate Pre-Assessment Checklist

- The hair is **wet** at time of assessment
  - The hair is distributed in sections
    - There are at least **three (3) sections**
    - The **partings are clean**
  - A minimum of **one (1) inch** or more is removed over the whole head form.
  - The **perimeter** is
    - Symmetrical / balanced
    - Connected continuously
  - The **interior**
    - Relates to the perimeter
    - Is symmetrical
    - Is blended
- Have you completed all steps in this checklist? Review Checklist.**

## Permanent Wave Demonstration

The time frame to complete this task is  
**45 minutes**

**Notes:**

The following components should be considered:

- **Curvature** of the head
- **Direction** of the wrap
- Use **equal** and **balanced** filler rods if required

**Overview**

The candidate will complete a conventional perm wrap on the **entire head**.

This wrap will demonstrate:

- Clean pre-sectioning **or** clean sectioning as you wrap
- Effective **rod** and **paper** use
- Pick/stabilizer-free finish
- **Size/colour of rod** is candidate's choice
  - Size/colour of rod may vary (various lengths of hair may require different sizes of perm rods)

**Candidate Pre-Assessment Checklist**

- The entire head must be wrapped** (100% of the hair must be in rods)
- Sectioning** is clean and correct
  - Uniform panels (panels are even at both ends)
  - Clean partings
  - No bricklay wraps
- Rod selection
  - Rod relates to **length** of subsection (rod length is equal or slightly less than the subsection)
  - Width** relates to **diameter** of rod (the width of the subsection is equal to diameter of rod)
- Winding** components
  - The rod is positioned **half off its base**, directly on the bottom parting
  - Even hair distribution
  - Appropriate **tension** for an alkaline wave (there is slight movement on each rod)
  - Proper band placement
- Curl check indicators
  - Neutral** ends (ends are not crossed, slanted, fish hooked, or running from side to side)
  - Ends **evenly** distributed (ends are not bunched more than half the length of the rods)
- Have you completed all steps in this checklist? Review Checklist.**

## Finished Blow Dry Style Demonstration

The time frame to complete this task is  
**20 minutes**

**Notes:**

The following components should be considered:

- **No scrunching** for this section
- Blow dryer and brush style **only**

### Overview

**Before** the demonstration begins:

- Candidates will proceed to the sinks to **wet** their model/mannequin’s hair before the task begins.
- When models/mannequins are back at workstations, candidates **stand back from their models** until the time to start the task begins.
- Wetness of hair is pre-checked by assessor(s)
- Models’ hair is **NOT** brushed until after the task begins (Timer starts).

The candidate will produce a finished blow dry style. This style will demonstrate:

- Movement
- Use of blow dry nozzle attachment / concentrator
- Proper equipment handling (Blower with brush)
- Professionally finished work (Use vent/round brushes, combs, and styling aids to complete the style)

### Candidate Pre-Assessment Checklist

- Pre-drying** completed (hair no longer looks wet, and was performed over whole head form with hands and blow dryer only)
- Completely blow dried to **100% dry** with styling tool
- Use **styling equipment** correctly
- Control
- Use of **nozzle**
- Direction (blow dryer is held **parallel** with the brush)
- Safe use (nozzle is **moving continuously** and is not lying on the hair)
- Coordinated blower with brush (implements are continuously **moving together**)
- The finished result demonstrates:
  - Movement** in the hair design (hair displays **Cs** throughout the head form)
  - Correct use of **volume**
  - Polished/professional finish
  - Dryness (hair is **completely dry all over the head** form including behind the ears, at the nape and on the ends of the hair)

**Have you completed all steps in this checklist? Review Checklist.**

## Curling Iron Demonstration

The time frame to complete this task is  
**Curls: 30 minutes**  
**Comb Out: 10 minutes**

### Overview

The candidate will produce a whole head of curls demonstrating **three (3)** separate types of curls:

- **On-base** curls on top of head
- **1/2-off base** curls on side of head
- **Off-base** curls on back of head

**After** the curls have been assessed, candidates will be told when to proceed with the comb out. A further **ten (10) minutes** are provided to perform the comb out.

#### Curling Iron Work:

- **No** ringlets
- Both Marcel and/or Spring types of irons are acceptable
- Use of product is **encouraged**
- Candidates may clip the curl **ONLY TO COOL THE CURL**
- All clips must be removed **once the time has elapsed**

#### Comb Out Work:

- No further iron work can be performed during the comb out

### Candidate Pre-Assessment Checklist

#### Curling Iron Work

- A base for the curl is formed by **pre-warming** (performed at the base of the hair, not on the strands of hair)
  - Is within **one (1) inch** of the scalp
  - Form a base with an **up-and-down rocking motion** with an open iron
- The iron is used correctly
  - Scalp is **protected**
  - Iron moving **continually**
  - Base size** relates to curling iron size (width and length)
  - Smooth **stem** (uniform and smooth, not slanted and no iron marks)
  - Completed **ends** (not crossed, slanted, fish hooked or bent)
- The entire head form must be curled**
  - Top of head – **On-base curls**
  - Mid Head – **1/2-off base curls**
  - Nape of head – **Off-base curls**
- All clips are removed

**Have you completed all steps in this checklist? Review Checklist.**

#### Comb Out

- The finished result (Comb out) demonstrates
  - Movement** in the hair design (hair displays **Cs** throughout the head form)
  - Correct use of **volume**
  - Polished/professional finish

**Have you completed all steps in this checklist? Review Checklist.**

<b>Afternoon Task</b>	<h2 style="color: #008080;">Electric Clipper Cut Demonstration</h2> <p>The time frame to complete this task is  <b>30 minutes</b></p>	
	<p><b>Model Two (2):</b> arrive at 1:40 p.m.</p> <p><i>Model Two (2) should arrive with <b>clean hair</b>. If a model arrives with dirty hair, any shampooing must be performed inside of the <b>15 minutes</b> of transition time allotted prior to the demonstration.</i></p>	<p><b>Notes:</b></p> <ul style="list-style-type: none"> <li>– Rinse/shampoo your client <b>before</b> assessment</li> <li>– Clipper cut is assessed on <b>wet</b> hair</li> <li>– Hair is not to be swept up until <b>after</b> assessment</li> <li>– <b>NO</b> hair tattooing</li> </ul>
<p style="text-align: center;"><b>Overview</b></p> <p>The candidate will execute a <b>high gradation</b> Clipper-over-comb cut. Specialized shears or straight razor can be used for texturizing, cutting, or blending.</p> <p>A <b>Zero Elevation Taper</b> is a <b>natural hairline</b> in the nape (at the back of the neck) starting from the skin (<b>zero degrees [0°]</b>) and gradually getting longer (<b>forty-five degrees [45°]</b>). This cut is achieved by using a clipper-over-comb technique.</p> <p><i>It is important to note that the nape on a mannequin model is designed to appear blocked. Candidates should behave as if this is the model's natural hairline.</i></p> <p>Marks <b>will be</b> deducted if the candidate turns the clippers to alter the nape hairline.</p> <p><b>The clipper cut will have the following characteristics:</b></p> <ul style="list-style-type: none"> <li>– Natural nape</li> <li>– Minimum 1/4 inch removed from a full head of hair</li> <li>– A balance between the longest and shortest lengths, free of shingles and divots</li> <li>– Demonstrate clean and finished blending, grooming, and outlining around sideburns and ears</li> </ul>	<p style="text-align: center;"><b>Candidate Pre-Assessment Checklist</b></p> <ul style="list-style-type: none"> <li><input type="checkbox"/> Assessed on <b>wet</b> hair</li> <li><input type="checkbox"/> The required length has been removed</li> <li><input type="checkbox"/> Minimum <b>1/4 inch removed</b></li> <li><input type="checkbox"/> Hairline <ul style="list-style-type: none"> <li><input type="checkbox"/> <b>Zero elevation</b> taper</li> <li><input type="checkbox"/> <b>Outlining</b> clean and straight behind the ear (side of neck)</li> <li><input type="checkbox"/> Grooming <b>even</b> around the right and left ears</li> <li><input type="checkbox"/> Sideburn area is <b>balanced</b> and <b>even</b></li> </ul> </li> <li><input type="checkbox"/> Blending <ul style="list-style-type: none"> <li><input type="checkbox"/> Clipper work <b>blended</b></li> <li><input type="checkbox"/> <b>Balanced</b> taper</li> <li><input type="checkbox"/> <b>Taper</b> relates to hairstyle</li> <li><input type="checkbox"/> <b>Internal balance</b> within the haircut</li> </ul> </li> <li><input type="checkbox"/> Finish <ul style="list-style-type: none"> <li><input type="checkbox"/> Loose hair is <b>removed</b> from client (refers to face, behind the ears and nape only, <b>not</b> on the cape)</li> </ul> </li> <li><input type="checkbox"/> Hair is <b>not swept up until after</b> clipper cut has been assessed</li> </ul> <p><input type="checkbox"/> <b>Have you completed all steps in this checklist? Review Checklist.</b></p>	

## Candidate Checklist: Visual Diagrams

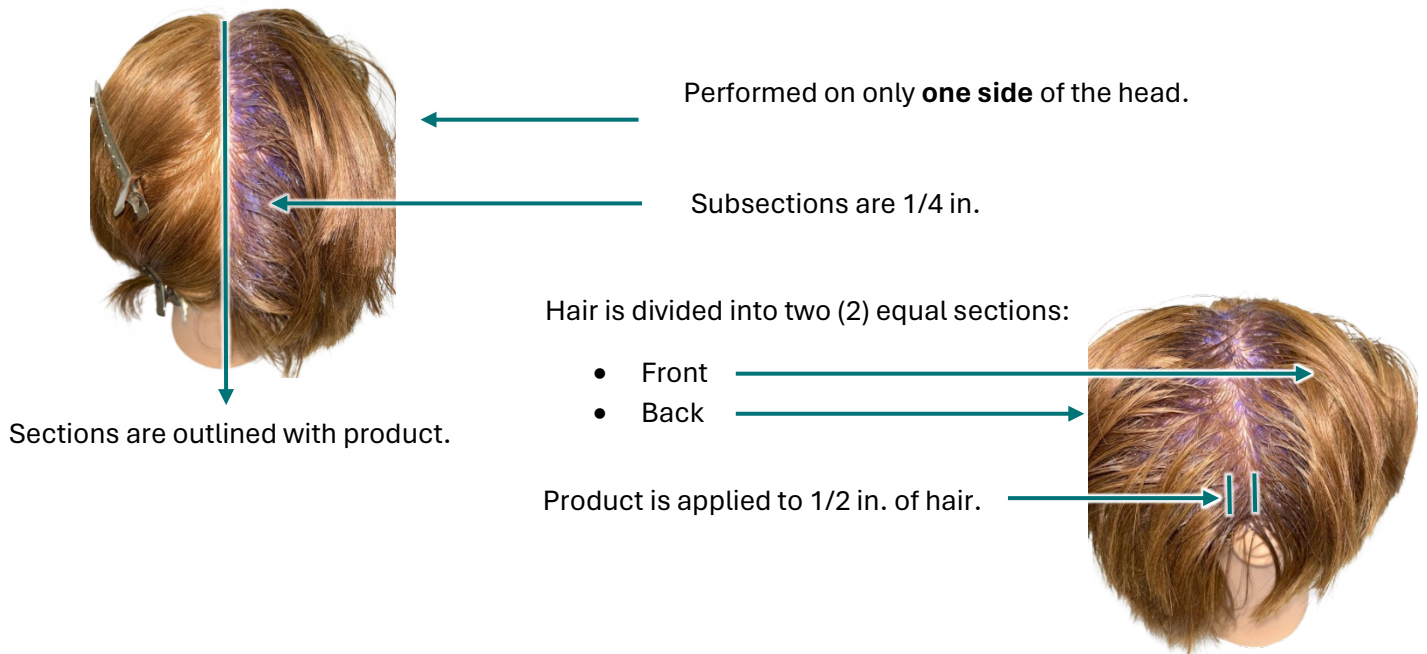
Morning Task

### Simulated Colour Retouch ½ in. Regrowth Demonstration

The time frame to complete this task is

**15 minutes**

*Refer to the demonstration checklist on page 7 for detailed instructions.*





## Simulated Foil Demonstration

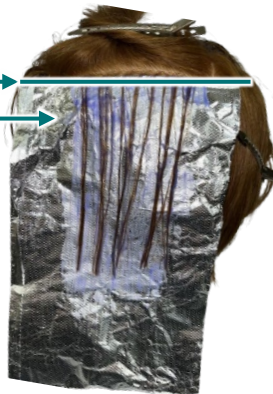
The time frame to complete this task is  
**15 minutes**

*Refer to the demonstration checklist on page 8 for detailed instructions.*

**Two (2)** distinct panels are placed on the opposite side of the head than where the Colour Retouch was performed

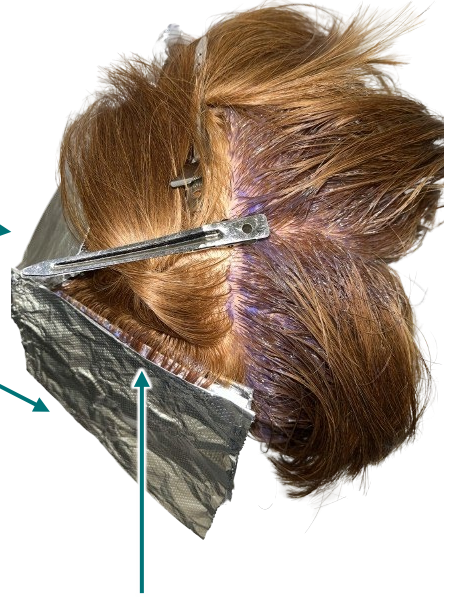
Four (4) woven highlights:

- Horizontally placed
- 1/8 in. finely woven



Four (4) woven highlights

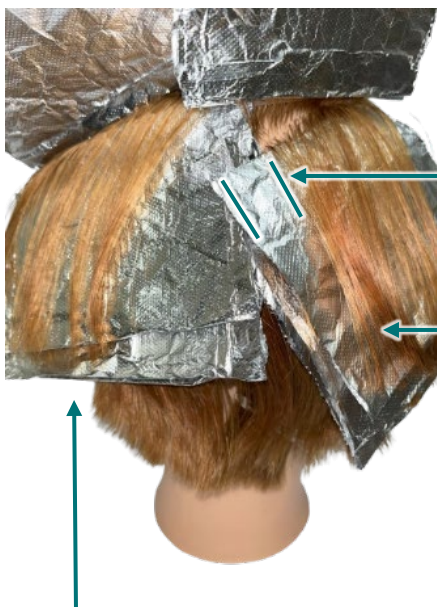
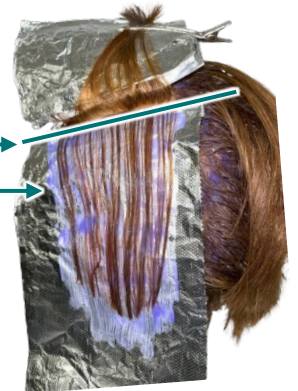
Four (4) sliced panels



Product is applied 1/8 in. away from the scalp.

Four (4) sliced panels

- Diagonally placed
- 1/8 in. slices



Panel width is slightly less than the width of the foil, foam, or mesh.

1/8 in. in between sections.

A single-fold technique is used.



## Layered Hair Shaping Demonstration

The time frame to complete this task is  
**30 minutes**

*Refer to the demonstration checklist on page 9 for detailed instructions.*



Perimeter:

- Symmetrical and balanced
- Connected continuously

A minimum of **one (1) inch** is removed over the whole head form.  
More than one (1) inch can be removed.

Interior:

- Relates to the perimeter
- Symmetrical
- Blended



## Permanent Wave Demonstration

The time frame to complete this task is  
**45 minutes**

*Refer to the demonstration checklist on page 10 for detailed instructions.*



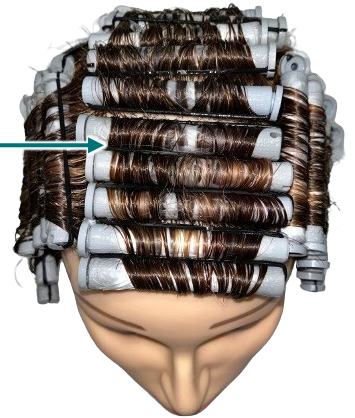
← The entire head form is wrapped

← Sectioning is clean and correct:

- Uniform panels
- Clean partings

Rod selection →

- Rod length is equal or slightly less than the subsection
- Width of the subsection is equal to the diameter of the rod



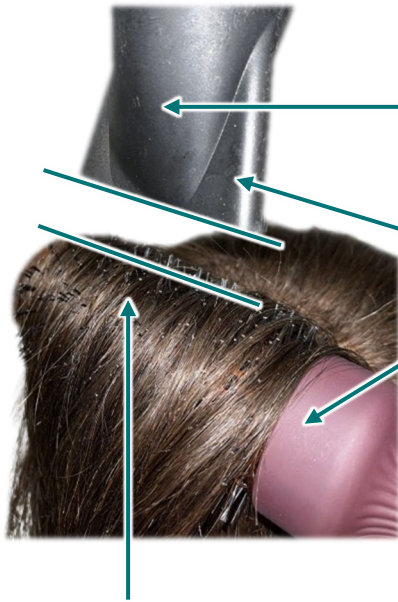
Winding components:

- Rod is positioned half-off its base, directly on the bottom parting
- Even hair distribution
- Appropriate tension for an alkaline wave (slight movement on each rod)
- Proper band placement

## Finished Blow Dry Style Demonstration

The time frame to complete this task is  
**20 minutes**

*Refer to the demonstration checklist on page 11 for detailed instructions.*



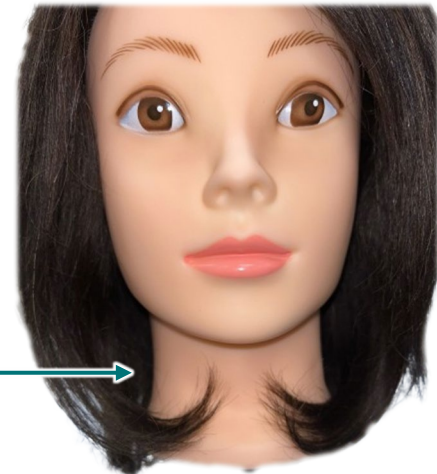
Blow dryer is held parallel with the brush

All implements are continuously moving together.

Nozzle is a safe distance from the hair. Nozzle is **not** lying on the hair.

Finished result demonstrates:

- Movement (displays “C’s” throughout)
- Volume
- Polished/professional finish
- Complete dryness



## Curling Iron Demonstration

The time frame to complete this task is

**Curls: 30 minutes**

**Comb Out: 10 minutes**

*Refer to the demonstration checklist on page 12 for detailed instructions.*

### Pre-warming

- Within one (1) inch of the scalp
- Form a base with an up-and-down rocking motion

The entire head form is curled:

- Top of head: On-base curls
- Mid head: Half-off-base curls
- Nape of head: Off-base curls



Iron is used correctly:

- Scalp is protected
- Iron is moving continuously
- Base size relates to the curling iron size
- Smooth stems
- Complete ends



Comb Out

- Movement (displays C and S shaping)
- Volume
- Polished/professional finish

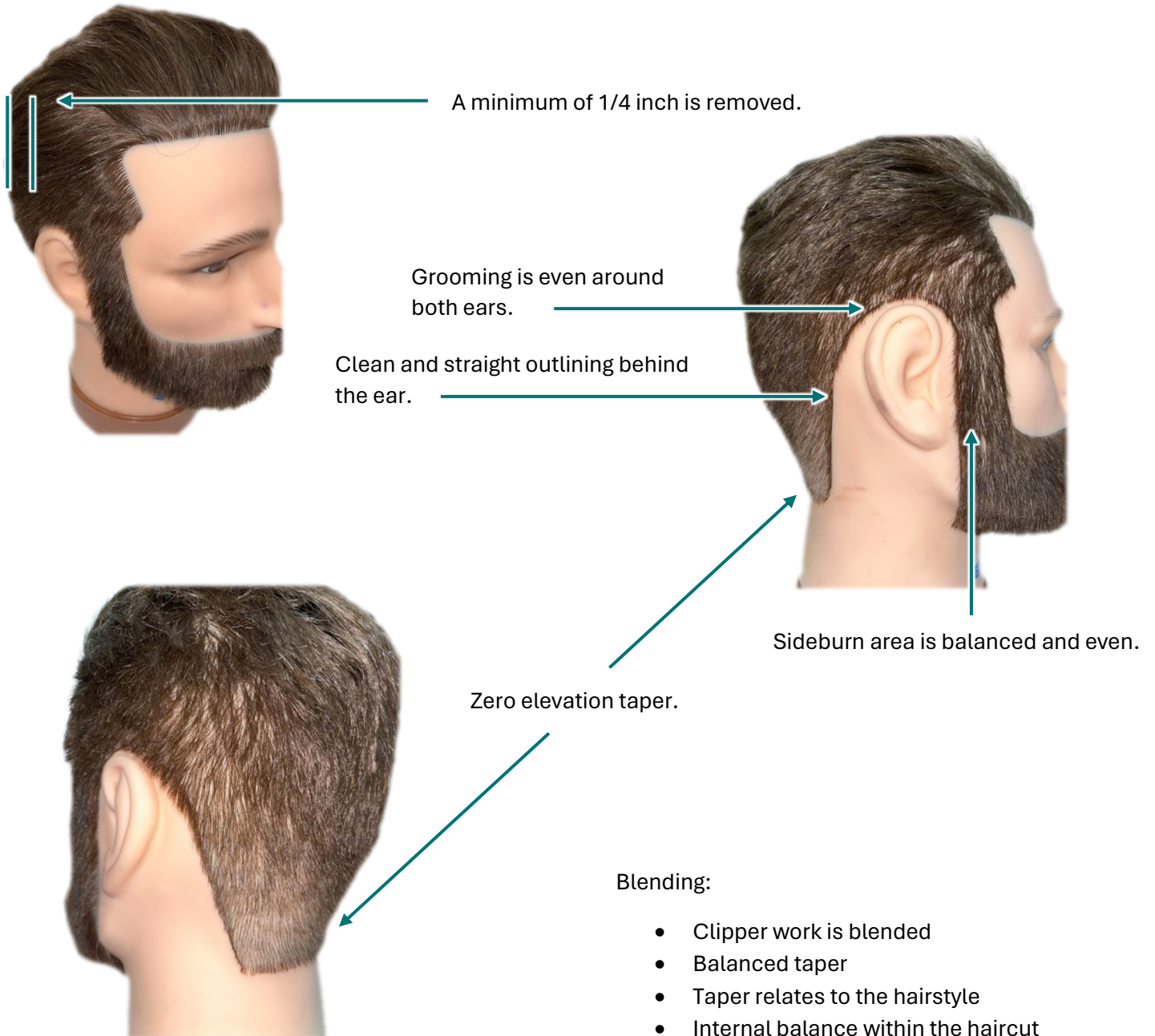




## Electric Clipper Cut Demonstration

The time frame to complete this task is  
**30 minutes**

*Refer to the demonstration checklist on page 13 for detailed instructions.*



## Commonly Asked Questions

### Q. Do I really have to do a practical examination?

A. Yes. For Saskatchewan hairstylists to qualify for a Red Seal – Interprovincial Journeyman certificate, both a **written** and **practical** examination must be administered.

### Q. How is the practical examination developed?

A. The Hairstylist examinations are developed by SATCC in co-operation with a committee of employee and employer representatives selected from the industry. The content for the examinations is based on the above committee's standards for a Saskatchewan Journeyman.

### Q. Who are my judges?

A. We are happy to tell you that there are **no judges, only assessors**. The assessors are made up of highly trained Journeyman Hairstylists who are both employers and employees from throughout Saskatchewan. A panel of **two (2) assessors** will be administering your practical examination to ensure a fair assessment is made of your skills to the required standards.

### Q. How is the practical examination assessed?

A. The Practical Examination assessors are vetted by the SATCC to ensure expertise in the trade. This expertise is applied in assessing the competencies required for each examination section. A **predetermined score sheet** has been developed by the Hairstylist Curriculum and Examination Development Board (CEDB) to maintain consistent marking practices.

### Q. Can the assessor's decision be based on my personal style versus theirs?

A. No. **Assessors are bound by strict rules** which indicate a specific standard which must be met. The assessors are confident that candidates will present themselves in a modern professional way, just as their employer and clients would expect.

### Q. Is the *Candidate Pre-Assessment Checklist* important?

A. Yes, these are the observable and measurable parameters **used to assess your skills**. You may bring the **entire** *Candidates Information Package*, including the *Checklist* to the examination.

## Commonly Asked Questions - Continued

### Q. Can I use more than two (2) models?

A. No. There is **no** provision for extra models. If you are having trouble finding a model, everyone has the option of using one (1) human hair mannequin (a model and a mannequin **cannot** be used). The mannequin, and mannequin stand, or tripod is supplied by the candidate.

### Q. Can I use a minor as a model?

A. Yes. Models must be a **minimum of 16 years old**. If a model is between the ages of 16 – 18 years old, be prepared to provide written consent from the minor’s parent or guardian. If this cannot be arranged, choose a different model.

### Q. Can I use a mannequin?

A. Yes. There is now an option available for candidates to use a human hair mannequin. If a mannequin is used:

- **One (1) mannequin** must be used throughout the entire examination.
- Mannequins must have at least **shoulder-length hair (approx. 6 in. to 9 in.)** at the start of the examination and have the appropriate hair-length for each of the seven (7) tasks required to be demonstrated during the practical examination.

### Q. Can I clean the neck area even though I have created a zero-elevation taper?

A. Yes. However, **do not block or square the nape by outlining**. It is important to note that the nape on a mannequin model is designed to appear blocked. Candidates should behave as if this is the model’s natural hairline. Marks **will be deducted** if the candidate **turns the clippers** to alter the nape hairline.

### Q. What if I have questions?

A. You have many options. First, **re-read your package of information**. Second, **share the Candidate Pre-Assessment Checklist** with your mentor/Journey person on staff, they can offer you additional help, encouragement, and support. Third, for the most up-to-date information, **contact the Commission** (not your former school) for any unanswered question, we would be happy to help you.  
(Regina 306-787-2444; Toll-free 1-877-363-0536)

### Q. Am I allowed to ask questions at the examination?

A. Yes. Questions can be **directed to the assessors** at your examination. They will share both your question as well as the answer with the **entire group** so that everyone can benefit from the information.

## Commonly Asked Questions - *Continued*

- Q. If I don't finish a section, does that mean I automatically fail the entire exam?**
- A.** Not necessarily. Each section of the exam is assessed **independently** and then totaled out of 100%. It is possible to not complete one section and to still pass the examination.
- Q. What is incomplete work?**
- A.** There are **two (2)** different classifications of **incomplete work**. The two types of incomplete work are:
- 1. Incomplete Work / Out of Time:** If a task was incomplete because a candidate ran out of time, the work that has been demonstrated will be assessed **but NO MARKS for this section are awarded**.
  - 2. Incomplete Work / Work Demonstrated is Not Correct:** If a candidate presents work for assessment which has **not** been performed as outlined in the Candidates Information Package, marks may not be awarded.
- Q. If my Blow Dry Style task assessment is complete, but I know my model's hair is still damp, can it be blow dried before the Curling Iron Demonstration begins?**
- A.** Yes, if there is additional time remaining before the next task to be demonstrated begins. Please **notify the invigilator** that you need to finish drying your model or mannequins' hair and proceed with blow drying until the invigilator called the group to start the next section for assessment, which is the Curling Iron Demonstration.

***If you have any other questions or comments, please contact your local Saskatchewan Apprenticeship Office.***



# APPENDIX A - Foil and Colour Retouch Measurement Chart

**1/4 in. Subsection**



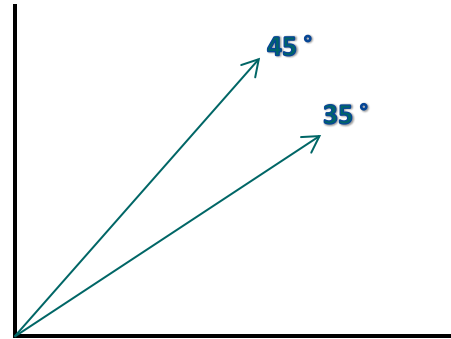
**1/8 in. Weave and 1/8 in. in between**



**1/2 in. Retouch**



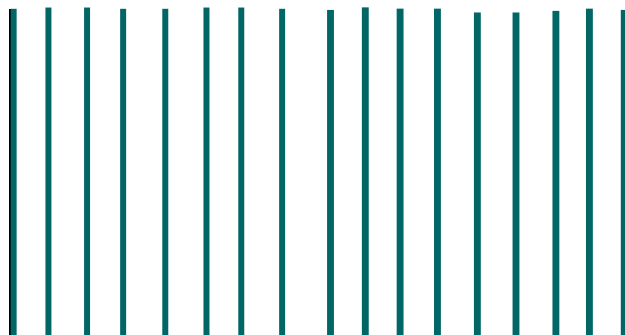
**Diagonal Angle**



**1/8 in. Slice and 1/8 in. in between**



**1/16 in. Weave    1/8 in. Weave**



## APPENDIX B - Model Release Form

Have this form **COMPLETED** and ready for submission at check-in.

I, print name \_\_\_\_\_ of print address \_\_\_\_\_ acknowledge that the hairstyling services being performed on me are for an examination. These services are being performed by an apprentice or tradesperson who is eligible to attempt this examination. I am not a Journeyperson Hairstylist, nor a holder of a Learner's Certificate, Special permit, or Hairstylist student card. I have no appreciable knowledge of the trade.

**My Stylist, name of Stylist** \_\_\_\_\_ **has already consulted with me regarding:**

(Please check only **one (1)** box)

- One (1)** haircut and **all** demonstrations **except** the Electric Clipper Cut Demonstration
- ONLY** the Electric Clipper Cut Demonstration
- All demonstrations** within the practical examination

The Saskatchewan Apprenticeship and Trade Certification Commission and its Hairstylist Trade Examining Board members are **not** responsible for the results of the services that I receive as a model.

Date of examination: \_\_\_\_\_ Signature: \_\_\_\_\_

---

### Candidate Statement

I have reviewed this package, I understand the directions and the deliverables required, and have described the tasks to my model. I understand that the Hairstylist Practical examination may be video recorded.

Date of examination: \_\_\_\_\_ Signature: \_\_\_\_\_

## Model Release Form

Have this form **COMPLETED** and ready for submission at check-in.

I, print name \_\_\_\_\_ of print address \_\_\_\_\_ acknowledge that the hairstyling services being performed on me are for an examination. These services are being performed by an apprentice or tradesperson who is eligible to attempt this examination. I am not a Journeyperson Hairstylist, nor a holder of a Learner's Certificate, Special permit, or Hairstylist student card. I have no appreciable knowledge of the trade.

**My Stylist, name of Stylist \_\_\_\_\_ has already consulted with me regarding:**

(Please check only **one (1)** box)

- One (1)** haircut and **all** demonstrations **except** the Electric Clipper Cut Demonstration
- ONLY** the Electric Clipper Cut Demonstration
- All demonstrations** within the practical examination

The Saskatchewan Apprenticeship and Trade Certification Commission and its Hairstylist Trade Examining Board members are **not** responsible for the results of the services that I receive as a model.

Date of examination: \_\_\_\_\_ Signature: \_\_\_\_\_

---

## Candidate Statement

I have reviewed this package, I understand the directions and the deliverables required, and have described the tasks to my model. I understand that the Hairstylist Practical examination may be video recorded.

Date of examination: \_\_\_\_\_ Signature: \_\_\_\_\_